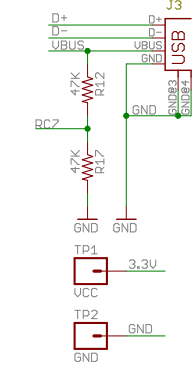
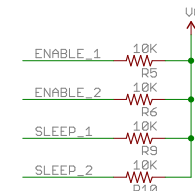
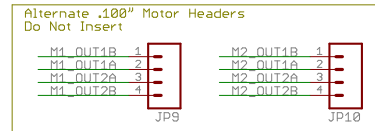
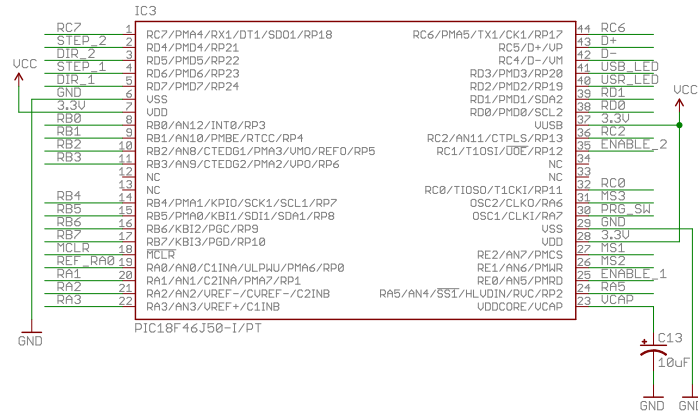
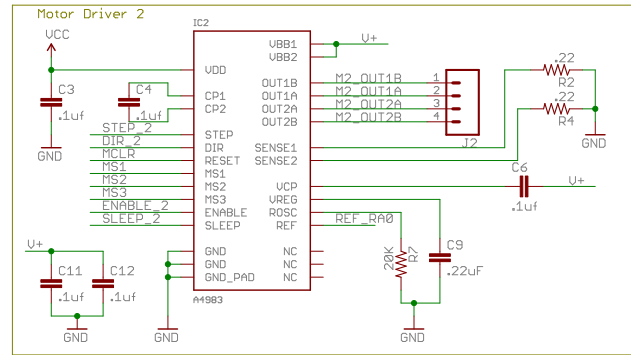
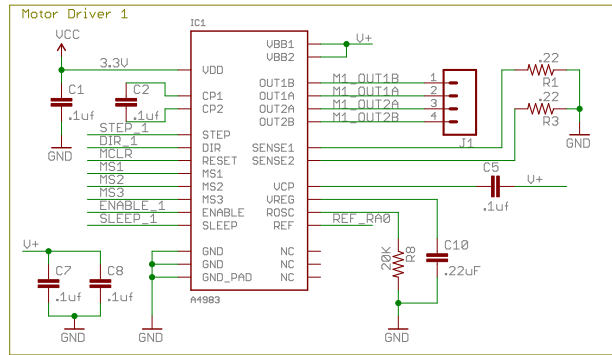


EiBotBoard (EBB)

licenced under Creative Commons v3.0 Attribution licence
Version 1.4
by Brian Schmalz of Schmalz Haus

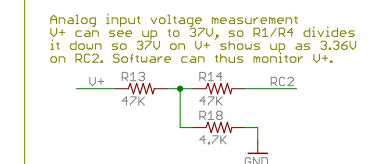
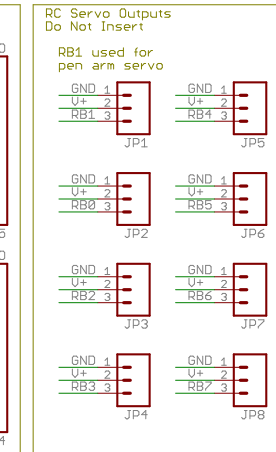
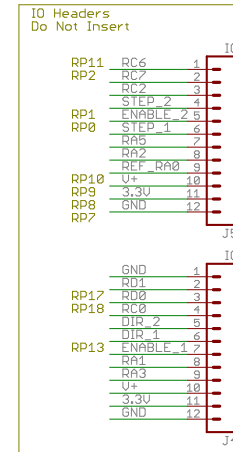
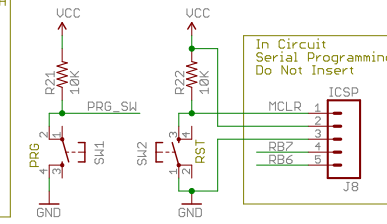
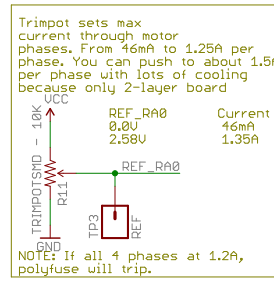
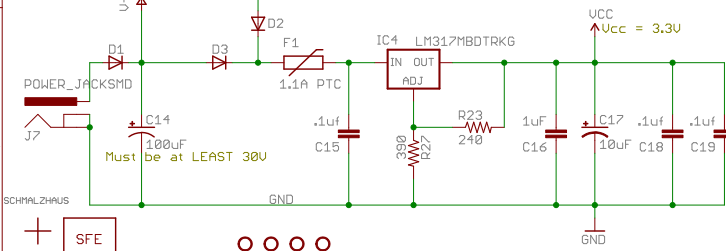
www.schmalzhaus.com/EBB

Change List
v1.2 12/01/2009
Switched to A4983 drivers
Added four RC servo connectors
Ganged some logic I/O between drivers
Switched pot and power conn to SMT
All extra I/O now on left side
v1.3 01/16/2010
All STEP/DIR now on PortD
C6 moved away from power connector
Moved PRG and RST for human fingers
Auto power from USB and power jack
Removed fixed resistor in VREF circuit
Fixed bug with R4/R1
Added pull ups on enable for bootloading
CPU can monitor input voltage now
v1.4 03/03/2010
Removed solenoid circuit
Pushed motor connectors together
Moved servo connectors to top edge
Added step/dir/enable nets to connectors
Added .100" optional motor headers



U+ Motor Power input - center positive, 5V to 30V DC

Allow 3.3V power from USB 5V if U+ motor supply not available



Title	EBB_v14
Version:	
	3/21/2010 7:55:06 PM
Drawn By:	1/1